

Measuring Guidelines

Natural Waist
Located above belly button, just below the rib cage. Bend to one side to find natural crease; then measure across at this point

Bust
Stand with your arms relaxed. Measure under arms and around the fullest part of the bust

Hips
With heels together, measure around the fullest part of the body

Hollow to Hem
Measure your height with the same heel height shoes and with feet totally together.

hollow

hem

Area of Measure	Your Measurements
Bust	
N. Waist	
Hips	
Hollow to Hem	
Extra Length	YES / NO

Overview

Bridesmaid gown designers each have unique measurement size charts and they are not the same when comparing to each other or especially when comparing to street clothes sizes. Most run smaller than street clothes so do not be alarmed if you fall into a larger size than you are accustomed. You will need to take your professionally acquired measurements and apply to your gown's designer measurement size chart to select your size. Gowns are not custom made to your provided measurements. If you are between sizes in the chart, always order the larger size since it is easy to take up a dress and usually impossible to let out due to modest seam allowances. Choose your size carefully as you may not have time to order another gown or additional fabric when it is too small. Most gowns will require custom fittings once it is received so please do not be surprised.

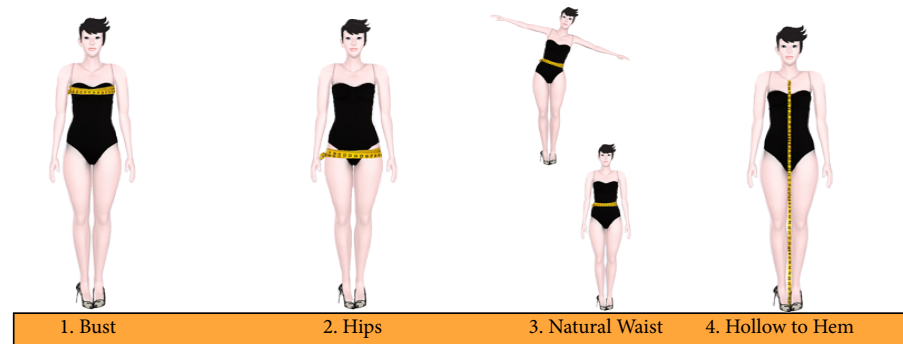
What you will need

1. A Clothing Tape Measure
2. 10 minutes
3. A professional to perform measurements. **YOU CANNOT MEASURE ACCURATELY YOURSELF.**

Tips

1. Always stand straight with your heels together and arms down at your side while being measured
2. Bust, Natural Waist, Hip, Hollow to Hem are required to select a size
3. We highly recommend you be measured by a professional tailor
4. Measurements should be against the body with undergarments (bra, slips) that will be worn with the dress during the event. Keep Thumb behind the tape. Tape should be snug but not too tight.
5. Hollow to Hem. Wear shoes with the same heel height being worn in event to obtain measurement. Review designer's measurement size chart to see if your overall "Hollow to Hem" measurement will require extra length. Extra length adds 1-6 inches to gown length, depending on designer.
6. Are you pregnant OR are you a flower girl. Anticipate your growth and future size needs at time of event.
7. The size chosen is your decision. We are able to provide tips and advice when you contact us at size@bridalsbylori.com. Please include your name, event date, & brides name with your question.

Visual Aid



1. Bust

- Position the measuring tape so that it covers the widest part of your back and the fullest part of your bust.

2. Hips

- Position the measuring tape so that it covers the widest part of the hips.

3. Natural Waist

- Located just above the belly button, just below the rib cage. The bend is your natural waist. Place the measuring tape around your natural waist.

4. Hollow to Hem

- A person's "Hollow to Hem" measurement determines the specific length needed for the gown. Ideally, wear the exact undergarments, slip, and shoes as the day of the wedding or event as this affects the measurement accuracy. Standing flat on the floor with both feet together have someone measure from the hollow point at the neck to the floor
- Designers make their dresses with a standard hollow-to-hem measurement, based on the size of the dress. This standard measurement varies between designers. Most designers recommend considering extra length, if you are taller than 5'8", including heel height

Extra Length (XL)

The standard Hollow to Hem length for a designer's gown will be on the measurement size chart for the designer. Use the number taken from your measurement against the size chart to help determine if you will need to get extra length on the gown. Example: If your hollow to hem is 58" inches and the standard length of the dress is 58.5 inches, we know that you will need to get the extra length. Some designers do not offer extra length, but instead increases length with a larger size to obtain a longer gown. This is particularly true with flower girl dresses.

EXAMPLE

Size	Bust	Waist	Hip	HH
0	32	24	35.5	60
2	33	25	36.5	60
4	34	26	37.5	60
6	35	27	38.5	60
8	36	28	39.5	60

SAMPLE SIZE CHART = SIZE 4

Choosing your size

If your measurements indicate different sizes for the bust, waist, and hip measurements, designers generally suggest ordering according to the largest measurement. Gowns can be taken-in, but due to the modest seam allowance in the gowns, there may not be enough fabric to release for a larger size.